

CHISAGO COUNTY GOVERNMENT CENTER

WATER QUALITY PROJECTS

The Chisago County Government Center campus has installed a variety of water quality projects over several years to treat the 2.6 million gallons of annual stormwater runoff flowing off the 142,000 square feet of impervious surface.

In 2004, the shoreline north of the building was restored to native plants. A native shoreline buffer stabilizes shoreline soils, reduces erosion, and filters water as it runs through the buffer.

In 2008, a vegetated swale with ditch checks was installed along North Lake Street. The ditch checks help slow the velocity of water, allowing sediment to drop out before reaching the lake. In the same year, a rain garden was installed to capture parking lot runoff behind the building. A level spreader and low retaining wall was installed to the north of the building to help reduce erosion and capture stormwater.

In 2010, a stormwater separator was installed at the end of North Lake Street below the swale with ditch checks. The separator traps floatable pollutants and sediment, which can be cleaned out by public works. Clean water outlets to the lake.

A large reconstruction project at the front entrance of the Government Center was installed in 2012. In conjunction with replacement of sidewalk and lighting, two rain gardens and two tree pits were installed to treat runoff water from the building roof, sidewalk, and parking lot.

In 2013, two additional rain garden swales were installed to capture and treat runoff from the newly re-surfaced Visitor Parking Lot.

A new parking lot reconstruction project in 2015 added the opportunity to include pervious pavement to the mix of BMPs shown at the Government Center.



Partners:

Chisago Lakes Lake Improvement District
Chisago Soil & Water Conservation District
Chisago County

Pollution Reduction:

(2012-2015 projects only)
Total Suspended Solids: 682 lb/yr
Total Phosphorus: 1.19 lb/yr
Volume: 0.88 ac-ft/yr
(P8 model)

Targeted Water:

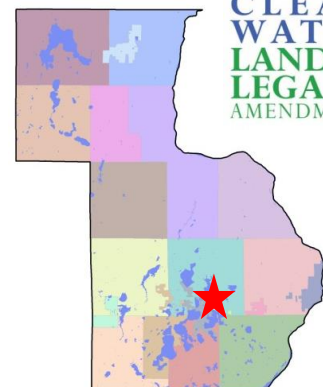
North Center Lake

Completion Dates:

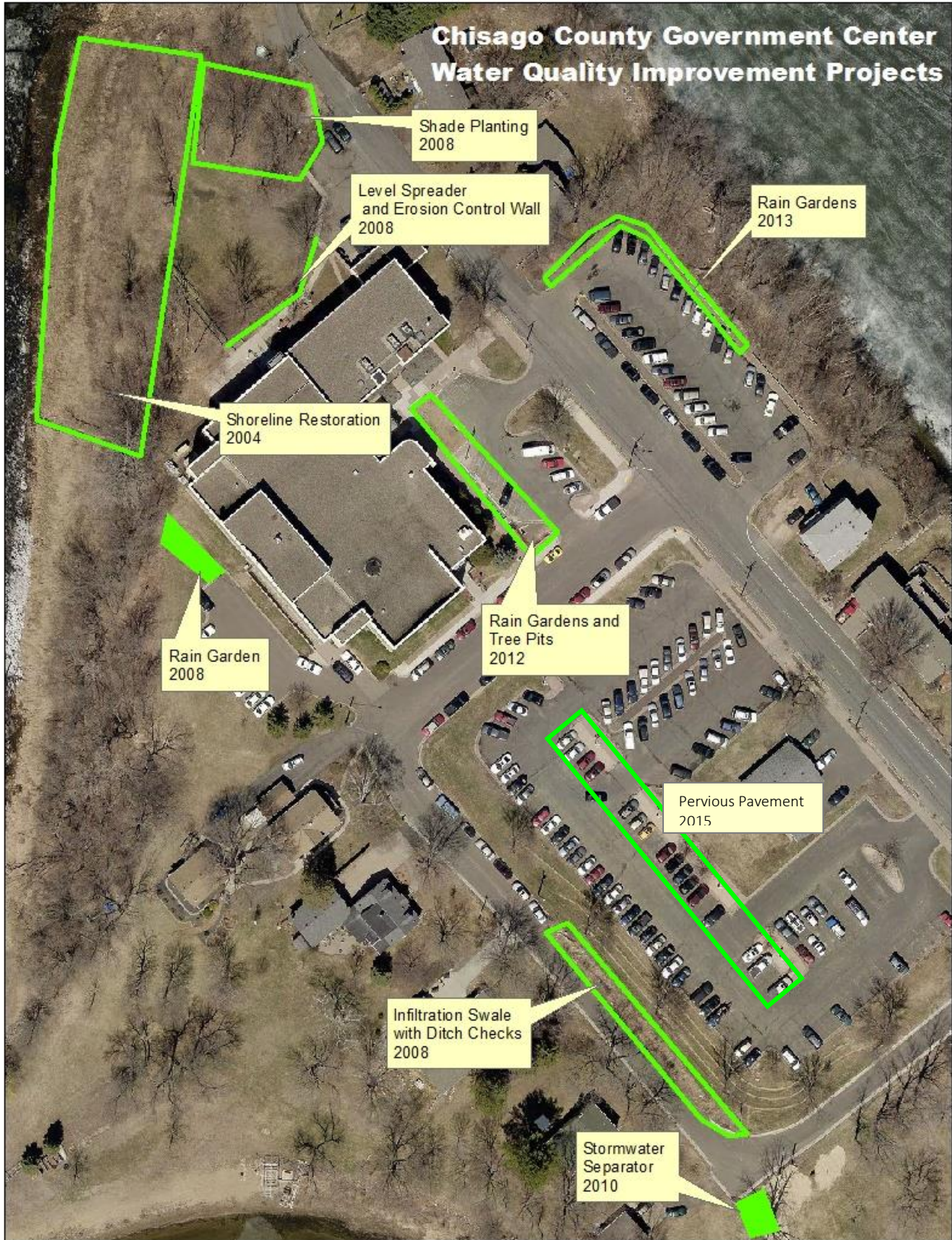
2004; 2008; 2012; 2013

May I Visit?

Yes – Park in visitor parking and carefully tour around the building to view all the different BMPs.



Chisago County Government Center Water Quality Improvement Projects



Shade Planting
2008

Level Spreader
and Erosion Control Wall
2008

Rain Gardens
2013

Shoreline Restoration
2004

Rain Garden
2008

Rain Gardens and
Tree Pits
2012

Pervious Pavement
2015

Infiltration Swale
with Ditch Checks
2008

Stormwater
Separator
2010